

Understanding Vapac Cylinder Serial Nos

Example – CM1N-2BA

1. **CC**
CD } Cylinder
CM

2. **1** 4kg/hr
2 6-8kg/hr
3 15kg/hr
4 30,45,90kg/hr
5 60kg/hr

3. **N** Normal plates (mesh)
L Low Conductivity (stainless steel)
H High conductivity

4. **2**
3 } Number of electrodes
6
12

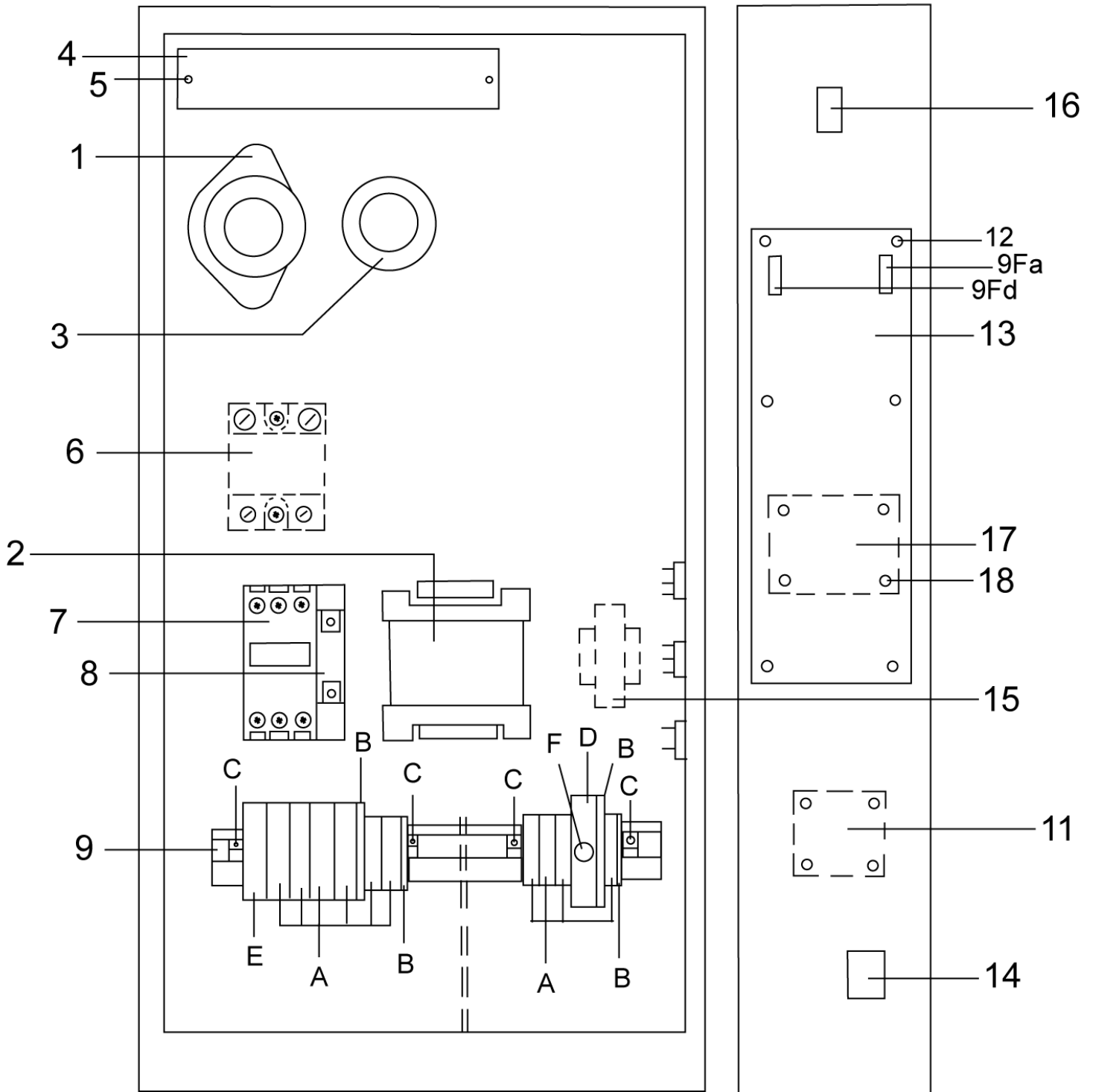
5. **B** With Barrier
W Without Barrier

6. **O** 22mm Outlet
A 35mm Outlet
B 54mm Outlet

Therefore CM1N-2BA = CM Cylinder
4kg/hr output
Normal plates
2 Electrodes
With Barrier
35mm Outlet

Vapac WL/PE/LMD

panel





Vapac WL/PE/LMD

panel

| No | Model | Supply Voltage | Item No | Description | £/each ex VAT | |
|----|---------|----------------|-----------|--|------------------------------------|-----|
| 1 | All | | EW1240149 | Current transformer 200T | POA | |
| 2 | a | 9-60 | EW1240110 | Transformer 70VA 24/8V: 200, 220/240, 380/415V | POA | |
| | b | 90 | EW1240111 | Transformer 100 VA 24/8V: 200, 220/240, 380/415V | POA | |
| | c | 9-60 | EW1240107 | Transformer 75 VA 24V: 208, 240, 480, 600V (USA) | POA | |
| | d | 60-90 | EW1240108 | Transformer 100VA 24V: 208, 240, 480, 600V (USA) | POA | |
| 3 | All | | EW8010157 | Cable grommet 32mm | POA | |
| 4 | All | | EW1150594 | LSI PCB | POA | |
| 5 | All | | EW1010030 | PCB Mount | POA | |
| 6 | a | All, 200-240V | EW1170153 | SSR D2490 | POA | |
| | b | All, 200-600V | EW1170155 | SSRH12 D4890 | POA | |
| 7 | a | 9-30 | EW1060501 | Contactactor 24V DPBF20 | POA | |
| | a | 9-60, | EW1060501 | Contactactor 24V DPBF20 | POA | |
| | a | 9-30 | EW1060501 | Contactactor 24V DPBF20 | POA | |
| | b | 45 & 90 | EW1060502 | Contactactor 24V DPBF22 | POA | |
| | c | 60, | EW1060503 | Contactactor 24V DPBF32 | POA | |
| | d | 60, | EW1060175 | Contactactor 24V CI45 | POA | |
| | d | 90, | EW1060175 | Contactactor 24V CI45 | POA | |
| 8 | 60 & 90 | | EW1060070 | Aux. contact for 7d | POA | |
| 9 | A | a | All | EW1200032 | Control terminal SAK 2.5 | POA |
| | | b | 9 & 18, | EW1200513 | Power terminal SAK 10 | POA |
| | | c | 30, | EW1200035 | Power terminal SAK 16 | POA |
| | | c | 45, | EW1200035 | Power terminal SAK 16 | POA |
| | | d | 30, | EW1200036 | Power terminal SAK 35N | POA |
| | | d | 45-90, | EW1200036 | Power terminal SAK 35N | POA |
| | | d | 60 & 90 | EW1200036 | Power terminal SAK 35N | POA |
| 9 | B | e | 60 | EW1200637 | Power terminal SAK G32 | POA |
| | | a | All | EW1200331 | End plate for 9Aa | POA |
| | | b | 9 & 18 | EW1200332 | End plate for 9Ab | POA |
| | | c | 30 & 45 | EW1200043 | End plate for 9Ac | POA |
| | | d | 30-90 | EW1200333 | End plate for 9Ad | POA |
| 9 | C | All | EW1200053 | End stop | POA | |
| 9 | D | a | All | EW1200060 | Fuse terminal SAKS1 (20mm) | POA |
| | | b | All | EW1200064 | Fuse terminal SAKS3 (1 1/4") (USA) | POA |
| 9 | E | a | 9 & 18 | EW1200360 | Ground terminal EK10 | POA |
| | | b | 30 | EW1200566 | Ground terminal EK16 | POA |
| | | b | 45 | EW1200566 | Ground terminal EK16 | POA |
| | | c | 30 | EW1200567 | Ground terminal EK35 | POA |
| | | c | 45 | EW1200567 | Ground terminal EK35 | POA |
| 9 | F | a | All | EW1080096 | Fuse 20mm Anti-surge 3.15A | POA |
| | | b | All | EW1080378 | Fuse 1 1/2" SLO-BLO 3.2A (USA) | POA |
| | | c | All | EW1080091 | Fuse 20mm Anti-surge 1A | POA |
| | | d | All | EW1080089 | Fuse 20mm Anti-surge 500mA | POA |
| 10 | All | | EWM300081 | Key pad label | POA | |
| 11 | All | | EW1150614 | Unit on/remote alarm PCB (option) | POA | |
| 12 | All | | EW4090082 | Spacing pillar 23mm | POA | |
| 13 | All | | EW1150613 | Microvap PCB C/W Display | POA | |
| 14 | All | | EW1190061 | Switch D/P On/Off/Drain | POA | |
| 15 | All | | EW1240016 | Transformer 24V:8V (USA) | POA | |
| 16 | All | | EW1110400 | Indicator Neon 240V | POA | |
| 17 | All | | EW1150607 | PCB GP7 Interface (option) | POA | |
| 18 | All | | EW1010177 | PCB Mount 22mm | POA | |

Standard 2-3 day delivery for orders below £800.00

30.00

Standard 2-3 day delivery for orders above £800.00

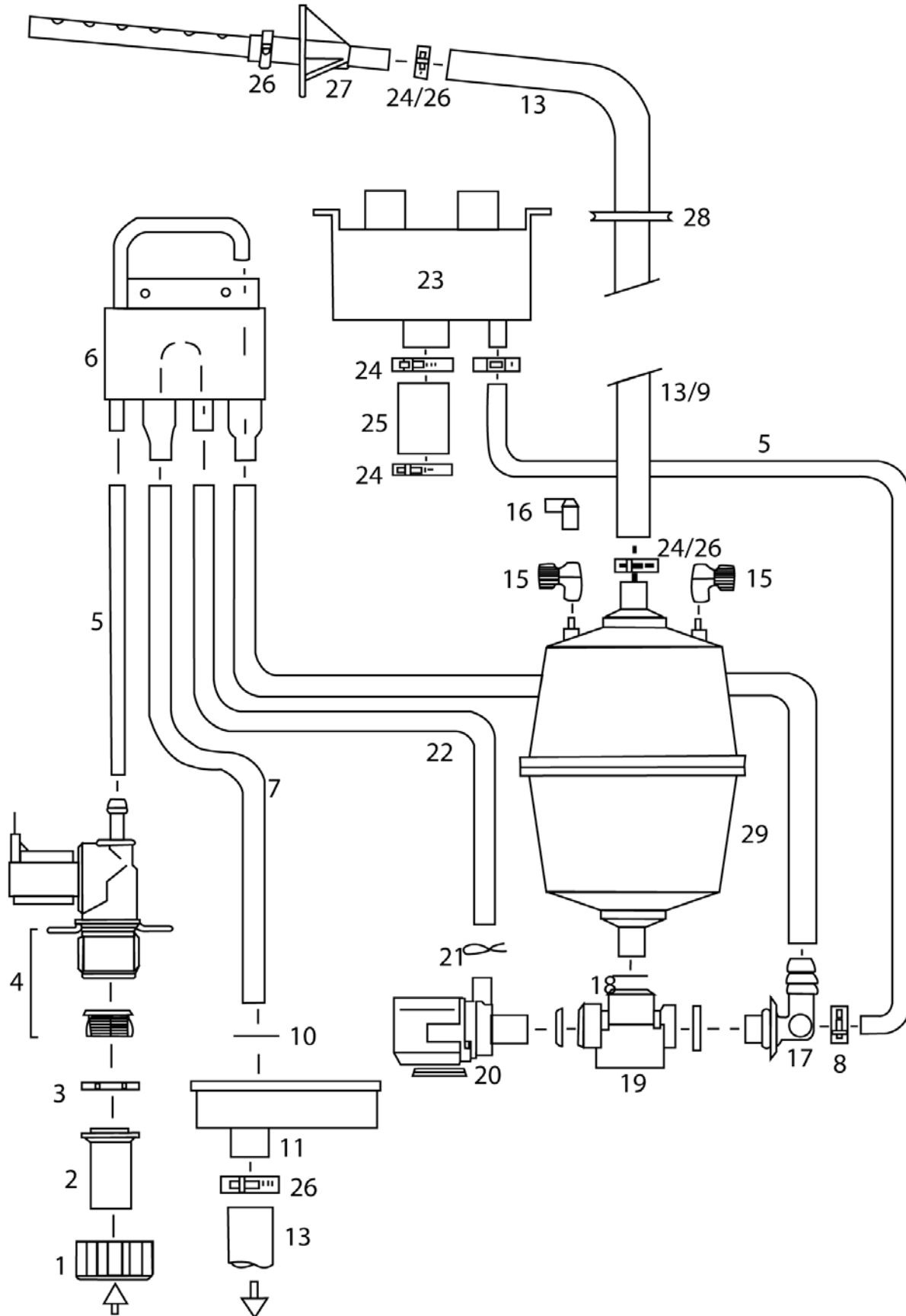
3% of order value

* - Consumable items recommended to be kept on site

All prices are valid until 31/03/09

Vapac WL/PE/LMD

fill/drain assembly



Vapac WL/PE/LMD

fill/drain assembly

| No | Model | Supply Voltage | Item No | Description | £/each ex VAT | |
|----|-------|----------------|------------|--------------------------------------|------------------------------------|-----|
| 1 | All | | EW2560320 | Nylon Nut | POA | |
| 2 | a | | EW2520130 | Inlet bush 15mm | POA | |
| | b | | EW2520131 | Inlet bush ½" (USA)/16mm | POA | |
| 3 | All | | EW4120422 | Rubber washer 14/24 | POA | |
| 4 | a | | EW2620320 | Valve nylon 9mm/1.21 24V 50/60Hz | POA | |
| | b | | EW2620325 | Valve nylon 9mm/2.51 24v 50/60Hz | POA | |
| 5 | All | | EW2560029 | Tube 9/15 | POA | |
| 6 | All | | EW3910168 | Tundish fill cup | POA | |
| 7 | All | | EW2560028 | Tube 16/22 | POA | |
| 8 | 60 | | EW4060011 | Hose clip 13-20 | POA | |
| 9 | a | 45-90 | EW2560042 | Steam hose (braided) 55/64 | POA | |
| | b | | EW2560044 | Steam hose 54/64 | POA | |
| 10 | All | | EW8010147 | Grommet seal | POA | |
| 11 | All | | EWM990600 | Drain tap with seal | POA | |
| 13 | a | 9-30 | EW2560038 | Steam hose 35/46 | POA | |
| | b | | EW2560041 | Steam hose (braided) 35/44 | POA | |
| 14 | a | 9-30 | EW2560028 | Tube 16/22 | POA | |
| | b | 45-90 | EW2560030 | Tube 22/28 | POA | |
| 15 | | 18-60 | EWM570003 | Electrode cap red | POA | |
| | a | All | EW8070408 | Cable lug 4mm ² /12 AWG | POA | |
| | b | 30, 45 & 90 | 380-440V | EW8070405 | Cable lug 6mm ² /10 AWG | POA |
| | b | 30, 45 & 90 | 460-600V | EW8070405 | Cable lug 6mm ² /10 AWG | POA |
| | c | All | 200-240V | EW8070004 | Cable lug 10mm ² /8 AWG | POA |
| | c | 9, 18 & 60 | 380-440V | EW8070004 | Cable lug 10mm ² /8 AWG | POA |
| | c | 9 & 18 | 460-600V | EW8070004 | Cable lug 10mm ² /8 AWG | POA |
| 16 | All | | EWM570002 | Electrode cap white | POA | |
| 17 | a | 9-30 | EW3910166 | Barbed elbow connector 16 | POA | |
| | b | 45 & 90 | EW3910167 | Barbed elbow connector 22 | POA | |
| | c | 60 | EWM990505 | Barbed elbow connector 22 | POA | |
| 18 | All | | EW3910037 | 'O' Ring | POA | |
| 19 | All | | EWM990503 | Feed/drain manifold (3x22) | POA | |
| 20 | a | All | EW2600061 | Drain pump 24V 50Hz (inside cabinet) | POA | |
| | b | | EW2600062 | Drain pump 24V 60Hz | POA | |
| | c | | EW2600070 | Drain Pump (underneath cabinet) | POA | |
| 21 | All | | EW4060031 | Wire hose clip 20 | POA | |
| 22 | All | | EW2560026 | Tube 13/19 | POA | |
| 23 | 60 | | EWM520188 | Steam manifold (Size 5/55) | POA | |
| 24 | 45-90 | | EW4060025 | Hose clip 55-70 | POA | |
| 25 | 60 | | EWM520191 | Hose connector 55 | POA | |
| 26 | All | | EW4060014 | Hose clip 32-45 | POA | |
| 27 | 9-30 | | EW3910026 | Steam pipe socket (35mm) | POA | |
| 28 | 9-30 | | EW8010078 | Grommet | POA | |
| | | 5 | EWPCD1N2WA | Cylinder | POA | |
| | | 9 | EWPCM2N2WA | | POA | |
| | | 18 | EWPCM3N3WA | | POA | |
| | | 30 | EWPCD4H3WB | | POA | |
| | | 45 | EWPCD4H6WB | | POA | |
| | | 60 | EWPCD5H6WB | | POA | |

Standard 2-3 day delivery for orders below £800.00 30.00

Standard 2-3 day delivery for orders above £800.00 3% of order value

* - Consumable items recommended to be kept on site

All prices are valid until 31/03/09